

Preparing for trusteeship

Trusteeship is an amazing opportunity for people who are passionate about helping others and developing their own skillsets.

The Trustee welcomes candidates from all backgrounds and experiences, because a diverse Trustee Board has richer discussions, makes better decisions and best represents the members it serves.

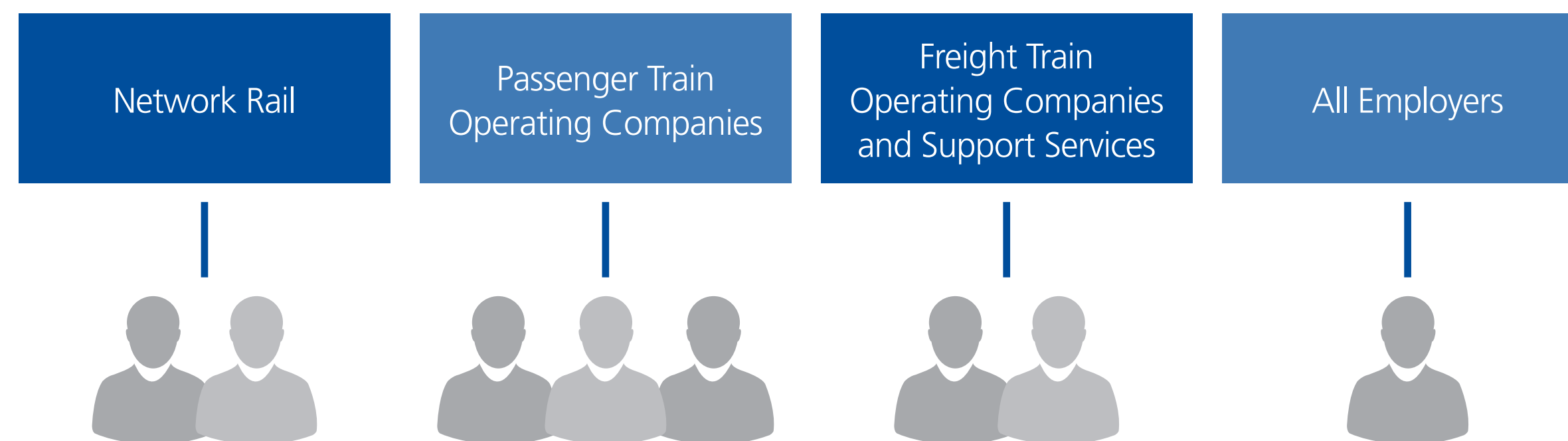
We've set out some key actions to prepare yourself for a potential future role in trusteeship.

What's the process of getting elected?

There are two specific routes to trusteeship on the Trustee Board and they depend on whether you are nominated as an Employer or Employee Director.

Employer Directors

Eight Employer Directors are nominated and elected by employers from four electoral groups:

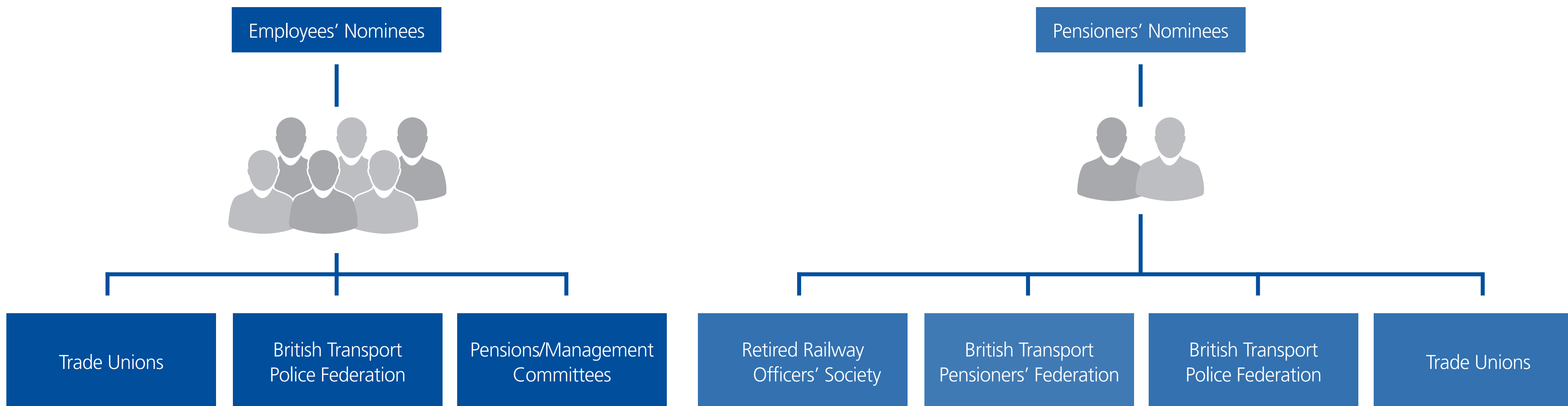


Your employer must nominate you for the role and support you with time away from work to fulfil your Trustee duties. If there are more nominations than vacancies, an election will be held and the employers in that electoral group will be asked to vote for their preferred candidate.



Employee Directors

Eight Employee Directors are nominated and elected by organisations that represent scheme members.



The relevant organisation would need to nominate you as a candidate. Each organisation will have their own procedures for selecting nominees. You will also need supporting signatures from scheme members (50 for an Employees' Nominee or 20 for a Pensioners' Nominee). If you are being nominated by a Pensions or Management Committee, you will need the nomination of the Committee as a whole and support from 75% of the members' appointees.

If there is more than one valid nominee then a secret ballot is held of all employees and pensioners, as appropriate, in the railways pension schemes. The successful nominees will be those with the most votes.



What can I do now?

Let the right people know

- Register your interest by emailing us with your contact details with reference 'FTCP' at RailwayPensionsTrusteeCompany@railpen.com.
- Your nominating organisation will receive election packs when there is a relevant vacancy to fill but, in the meantime, be mindful of potential vacancies and speak to your nominating organisation. You can see Trustee Directors' terms on the Railways Pension Scheme website by clicking [here](#).

Learn more about the role

- Complete free online learning with [The Pensions Regulator's Trustee Toolkit](#).
- Familiarise yourself with the railways pension schemes by looking at the Railways Pension Scheme or British Transport Police Force Superannuation Fund sites, which include all sorts of helpful information, including the most recent Annual Report and Accounts.

Existing Pensions/Management Committee member or Designated Employer Contact

- Attend Railpen's Trustee Knowledge and Understanding days 1, 2 & 3, which are free training days for members of Pensions & Management Committees.
- Sign up to Railpen's conferences and seminars. You can attend exciting and informative events including twice yearly investment conferences, valuation seminars (if in a valuation cycle) and an annual pensions conference

Additional opportunities:

- Join your Pensions or Management Committee if your Fund or RPS Section has one. Approach your employer, Trade Union or contact Client Secretariat (ClientSecretariat@railpen.com) to discuss joining the Committee, which will give you a flavour or what to expect
- Gain pensions exposure through your employer's other schemes. Your employer may have other pension arrangements where you can gain experience of pensions and a boardroom environment by joining their trustee board.

Other information and useful websites to visit:

- [Railways Pension Scheme - The Trustee](#)
- [British Transport Police Force Superannuation Fund - The Trustee](#)
- [Trustees - Trustee toolkit, online learning, guidance and resources | The Pensions Regulator](#)
- [Events - The Pensions Management Institute \(pensions-pmi.org.uk\)](http://pensions-pmi.org.uk)
- [Events \(plsa.co.uk\)](http://plsa.co.uk)
- [Railpen](#)

Keep in touch

We hope you've found these suggested actions helpful.

If you have registered your details with us we'll contact you occasionally to ask if you:

- remain interested in becoming a Trustee Director
- have the support of a nominating organisation
- need any further information or support

If you have any questions in the meantime, please email us at CompanySecretariat@railpen.com.

